



# Accelerating Clean Energy @ Scale (ACES)

Murali Baggu

Laboratory Program Manager, Grid Integration

Martha-Symko Davies, Laboratory Program  
Manager, Accelerating Clean Energy at Scale

International Microgrid Symposium, Nov 2, 2022

**Businesses and communities are pursuing ambitious clean energy initiatives to mitigate environmental and economic risks and address system inequities.**



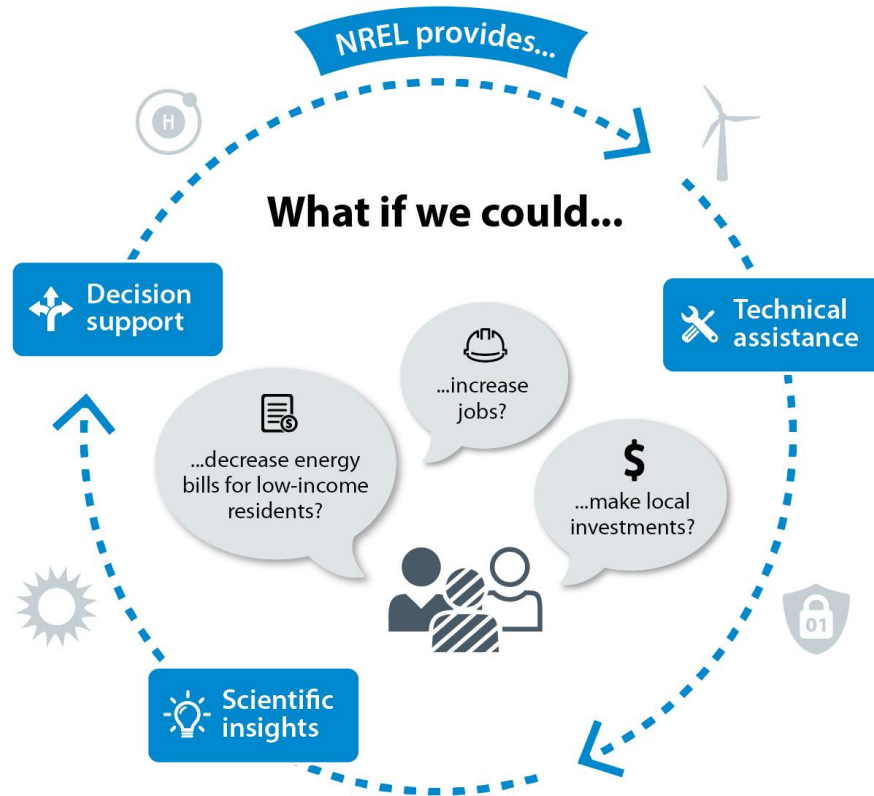
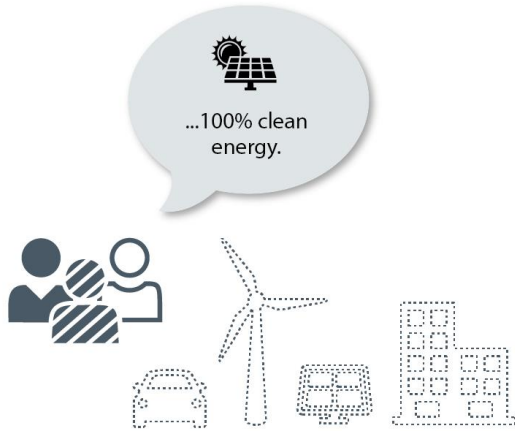
LA100 team at Pine Tree Wind and Solar Farm, California

To move from **ambitions to actions**, communities often need **in-depth energy-sector expertise and insight**.

As a U.S. Department of Energy (DOE) research lab, **NREL offers unbiased, best-in-class analysis and modeling capabilities** supported by **decades of scientific and applied research, expertise, and partnerships**.

# Illuminate pathways to clean, affordable, equitable, secure, and resilient energy systems

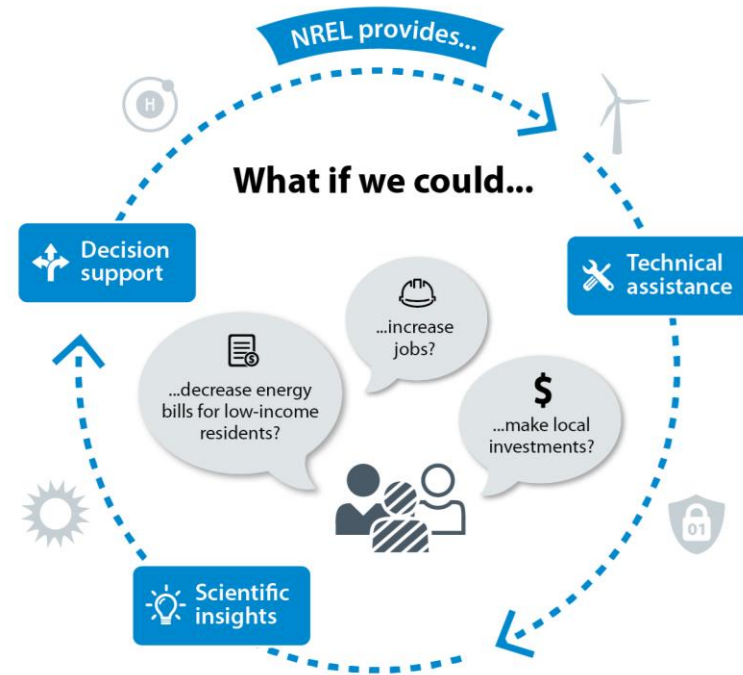
## Our ambition is...



## Now we can take action to...



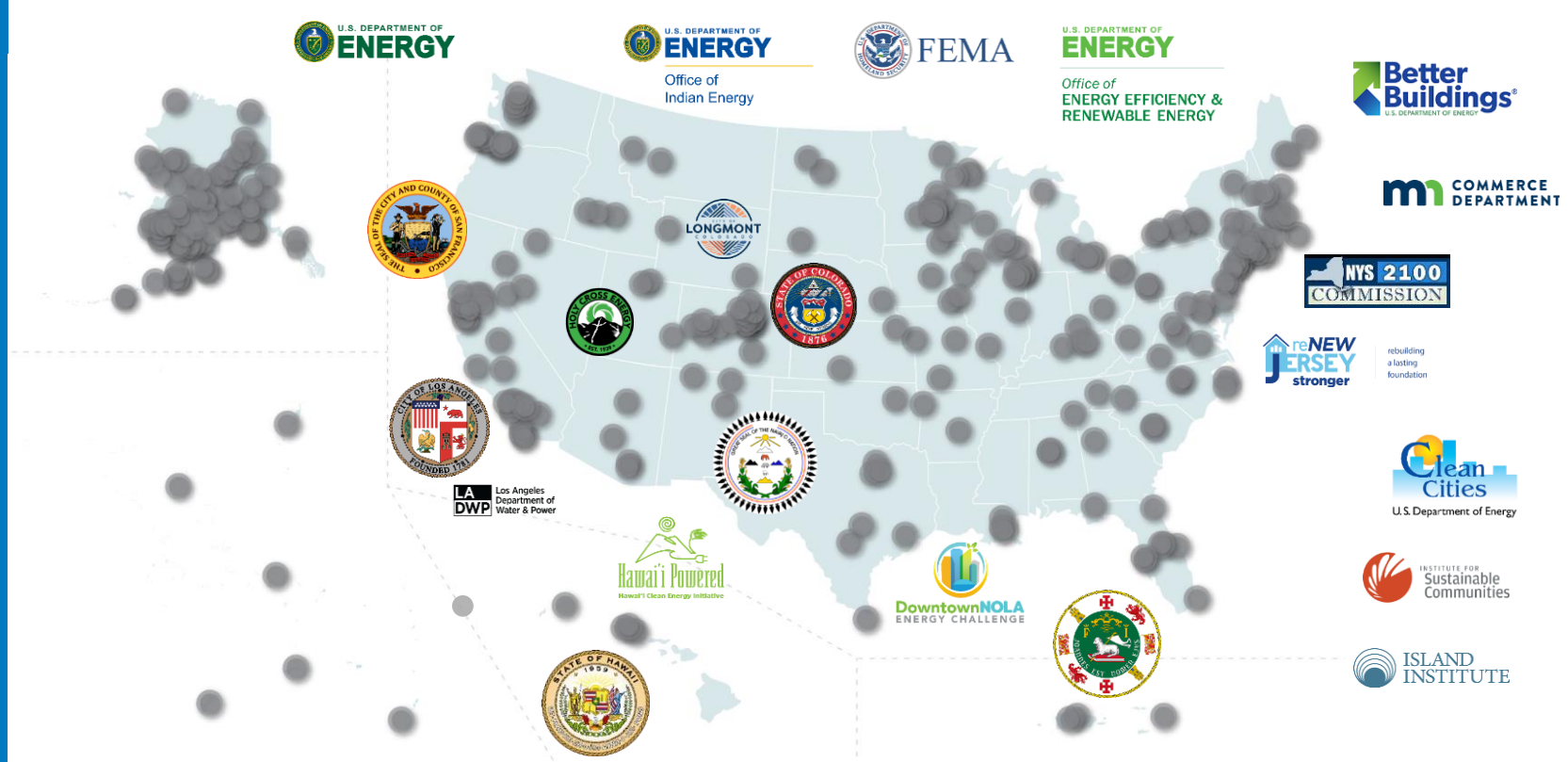
Customized,  
holistic modeling  
and analysis to  
support strategy  
development with  
communities and  
partners.



To address communities' unique energy-system goals and diverse stakeholder priorities, **ACES provides data-driven, technically sound, actionable insights including:**

- Partnership opportunities
- Investment strategies
- Technology possibilities/scenarios
- Energy equity considerations
- Illustration of trade-offs.

ACES applies best practices, proven methodologies, and strategies from decades of experience to support communities across the nation in achieving energy goals.



Our approach supports diverse and wide-ranging energy goals and transitions—in small communities to regional collaboratives—building momentum toward a **national equitable, clean energy economy**.

Decision support and technical assistance to implement community-selected options, leveraging public and private funds to enable investments.



- Demonstrate, validate, and de-risk
- Identify investment-ready options
- Support workforce development
- Deploy effective implementation teams.

Public-sector clean energy investments leverage 3x private capital

Source: ARRA §1603 data

# Example: Supporting resilience in vulnerable communities



## Community priorities

Remote, island, and islanded community energy and infrastructure challenges, values, and goals



## Partnership approach

Deep energy-sector experience, expertise of the national labs + local, trusted stakeholder organizations



## Energy assessment and planning

Provide resources and on-the-ground support



## Resilient energy systems

Knowledge sharing → lessons learned, use cases → identified responsive technology needs

# Multiple Business Lines that Leverage the ACES Suite of Capabilities



**Communities to Clean Energy (C2C)**



**PR100**



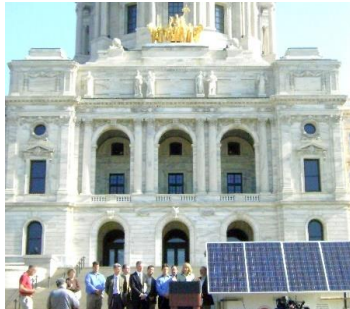
**Sub-national Clean Energy Transitions**



**Communities LEAP (Local Energy Action Program)**



**ETIPP**



**WIP**



**State, Local, and Regional Clients  
*LA100 Equity***



**Rural and Remote Communities Consortia**



**Rapid, widespread transition to clean, affordable, equitable, secure, and resilient energy systems.**



**Positively impacting millions of Americans, including those who are historically underserved, by:**

- Boosting local economies
- Increasing energy security and affordability
- Advancing environmental equity
- Reducing emissions
- Building energy system resilience.

# Thank you



This work was authored by the National Renewable Energy Laboratory, operated by Alliance for Sustainable Energy, LLC, for the U.S. Department of Energy (DOE) under Contract No. DE-AC36-08GO28308. The views expressed in the article do not necessarily represent the views of the DOE or the U.S. Government. The U.S. Government retains and the publisher, by accepting the article for publication, acknowledges that the U.S. Government retains a nonexclusive, paid-up, irrevocable, worldwide license to publish or reproduce the published form of this work, or allow others to do so, for U.S. Government purposes.

